

ALL REGISTERED VOTERS IN VIRGINIA MAY VOTE EARLY, EITHER IN PERSON OR BY MAIL.

WAYS TO VOTE

RECEIVE A BALLOT BY MAIL

Request a ballot at elections.virginia.gov/absentee by **5 p.m., June 6**. You may return your ballot:

- **By mail:** postmarked on or before **June 17** and received by **noon on Friday, June 20**.
- **Before Election Day:** to your voter registration office, drop-off location, or satellite location.
- **On Election Day (by 7 p.m.):** to your voter registration office, any polling place, or drop-off location.

**Since July 1, 2023, witness signatures are not required to vote by mail. You will need to provide the last four digits of your social security number and year of birth. If you do not have a social security number, you can provide your voter ID number instead.*

IN PERSON BEFORE ELECTION DAY

From May 2 through June 14:

You can vote early at your local voter registration office. A satellite voting location may also be available. Bring acceptable ID.

Find your local voter registration office:
elections.virginia.gov/VRO

IN PERSON ON ELECTION DAY

On Tuesday, June 17, 2025, vote at your polling place. **On Election Day, polls are open from 6 a.m. until 7 p.m.**

Bring acceptable ID.

Find your polling place:
elections.virginia.gov/VoterInfo

Dates to Know

May 2 - First day to vote early at your local voter registration office or satellite voting location. Find your local office:

elections.virginia.gov/VRO

May 27 - Last day to register or update your address to vote a regular ballot for this election

Voters may register in person after this date, through Election Day, and vote using a provisional ballot

June 6 (by 5 p.m.) - Last day to request that a ballot be mailed to you

June 7 (Saturday) - Local voter registration offices open for in-person voting

June 14 (Saturday) - Last day to vote early in-person at your local voter registration office

June 17 (Election Day) - Vote at your polling place. Polls are open 6 a.m. to 7 p.m.

SERVE AS AN OFFICER OF ELECTION

Officers of Election are always in demand.

Learn more and apply at
elections.virginia.gov/officer



★ VIRGINIA ★
DEPARTMENT
of ELECTIONS

Virginia Voter Pocket Guide



June 17, 2025 Primary Election



VOTE.VIRGINIA.GOV

INFO@ELECTIONS.VIRGINIA.GOV

(800) 552-9745 / TTY 711



[@VirginiaELECT](https://www.facebook.com/VirginiaELECT)



[@vaELECT](https://twitter.com/vaELECT)

BRING YOUR ID

You need to show acceptable ID or sign an ID Confirmation Statement to vote in person for all Virginia elections.

Acceptable forms of identification

- Voter confirmation documents
- Virginia DMV-issued driver's license or ID card (current or expired)*
- United States Passport (valid)
- Employer-issued photo ID (valid)
- Student ID issued by a Virginia college / university / high school (valid)
- Student photo ID issued by U.S. college / university (valid)
- Other U.S. or Virginia government-issued ID
- U.S. Military ID (valid)
- Virginia Voter Photo ID Card
- Original or copy of any current utility bill, bank statement, government check, paycheck, or other government documents with your name and address (within the past 12 months)

**Neither a Virginia Driver Privilege Card nor an out of state license is acceptable for voting purposes.*

Full list of acceptable IDs:
elections.virginia.gov/VoterID

For more information, contact your local voter registration office:
elections.virginia.gov/VRO

WHAT TO EXPECT AT THE POLLS

When you arrive, election officers will be there to help you:

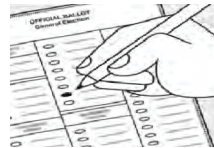
1. CHECK IN

Say or write your name and address. Show an acceptable ID.

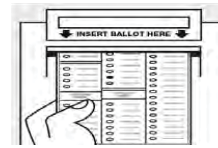
2. RECEIVE & CHECK BALLOT

Make sure it includes all contests for your district.

3. GO TO BOOTH & VOTE



On your ballot, fill in the oval next to your choice(s).



When you're done, scan your ballot.

If there is any issue, please ask an election officer for assistance.

VOTER RIGHTS

- ★ Ask for a new ballot if you want to change your vote before you cast it.
- ★ Vote a provisional ballot if your name doesn't appear on the voter list or you forgot to bring an acceptable ID (and refuse to sign an ID Confirmation Statement).
- ★ Vote if you are in line by 7 p.m. on Election Day when the polls close.

For more, visit: elections.virginia.gov/rights

ACCESSIBLE VOTING

There are accessible voting options at each polling place and early voting location.

If you are 65 or older, or have a disability, you can vote from your vehicle at the polls on Election Day or at your local voter registration office before Election Day. Locate a curbside voting sign for instructions on how to alert elections staff of your need for curbside assistance. You may also bring someone with you who can assist you with voting. You can get help reading or writing from an election officer or your own assistant.

If you are blind, have low vision, or have impaired manual dexterity (e.g. have a print disability), accessible voting options are available, including but not limited to using an electronic ballot marking tool for absentee ballots and accessible voting equipment at the polling place. Your general registrar or an officer of election can assist you in accessing these options.

Contact your local voter registration office for details:
elections.virginia.gov/VRO

For more information:
elections.virginia.gov/accessible

